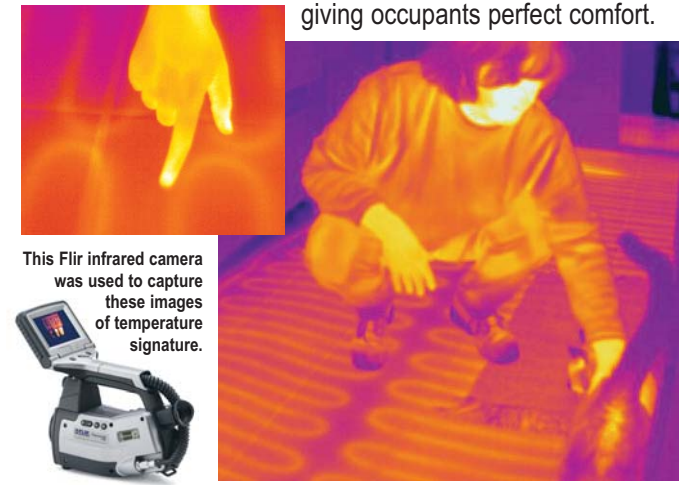




WarmWire is a simple, economical way to warm floors. Warm all kinds of floor coverings including ceramic tile, stone, wood, laminates, vinyl or carpet. WarmWire is true radiant floor heating. It warms your floor and feet much like a mug of hot coffee or cocoa warms your hands. Infrared photography shows how a WarmWire radiant floor matches the skin temperature of the human body (85-90°F), giving occupants perfect comfort.



This Flir infrared camera was used to capture these images of temperature signature.



Warm the floor of a powder room or large family room. There really is no limit. A single cable can heat a 240 sq.ft. area at 3" o.c. Larger rooms can be warmed with multiple cables wired together.

WarmWire, in most situations, will provide all the heat necessary for a room, as well as simply warm the floor. It delivers just over 40 BTUH per square foot, which is quite a bit of heat. Most rooms need less than this to be heated. So, if you want WarmWire to be the sole source of heat in a room, it will likely do the job. Contact your local retailer to find out.



WarmWire Strapping

The WarmWire is held in place by WarmWire strapping attached to the subfloor or backerboard.

 SunTouch
WarmWireTM
FLOOR WARMING SYSTEM



4500 E. Progress Place
Springfield, MO 65803

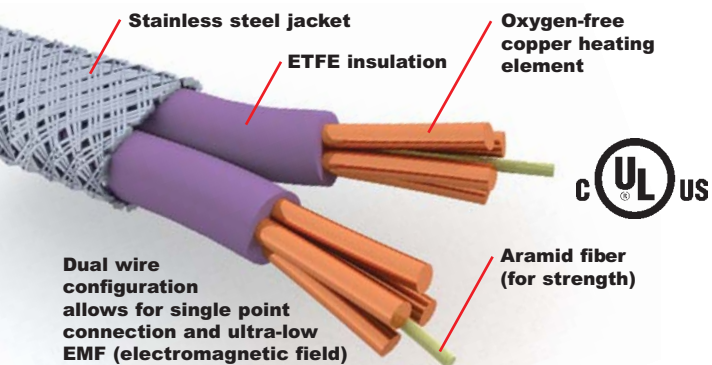
Toll free phone: 888-432-8932
Website: www.suntouch.net

 SunTouch
WarmWireTM
FLOOR WARMING SYSTEM



WarmWire is true radiant floor heating. It warms your floor and feet much like a mug of hot coffee or cocoa warms your hands.

WarmWire™ up close.



WarmWire™ features and benefits.

- Single point electrical connection for easier wiring and layout.
- Insulated with high-performance ETFE for longer life.
- Strengthened with aramid reinforcing to protect the heating elements.
- Protected with stainless steel jacket for durability and longevity.
- Available in both 120 VAC and 240 VAC to accommodate both smaller and large rooms.
- Sizes available up to 240 sq.ft.
- UL Listed in the USA and Canada.
- Grounded from one end to the other for safety.
- Dual wire design with Ultra-low EMF for peace of mind.

WarmWire™ estimating and sizing.

When figuring the area to be heated, do not include the area under cabinets or appliances. Leave the wire at least 4" away from the toilet wax ring and 2"-3" away from your walls. Do install up to the toe-kick in front of kitchen or bath cabinets so your toes stay warm. Pick a "spacing factor" (2", 2.5", or 3" on center). Below are guidelines for application and respective spacing recommendations.

- **2" o.c. delivers 15 Watts per sq.ft.** — Basement slabs, sunrooms, high heat loss areas, etc.
- **2.5" o.c. delivers 12 Watts per sq.ft.** - Bathrooms, kitchens, dining/living areas, etc.
Note: 2.5" o.c. is most commonly used spacing.
- **3" o.c. delivers 10 Watts per sq.ft.** - Hallways and other low heat loss areas, or floors in more moderate climates.

WarmWire™ control options.

Programmable FloorStat Control

The Programmable FloorStat is both elegant and intelligent. Available for both 120 VAC and 240 VAC, it accepts programming for three set-points: Comfort, Economy (set-back), and Vacation. Features include:

- A floor sensor that directly senses floor temperature
- A 16-amp capacity controlling up to 150 sq.ft. of 120-VAC WarmWire, or 260 sq.ft. of 240-VAC WarmWire
- Built-in ground fault protection with no need for a separate GFCI (in most code areas)
- Large digital display
- Temperature range of 40° to 104°F
- Temperature display in °F or °C
- On/Off switch
- Connection for new Remote FloorStat Control



FloorStat Control

The non-programmable FloorStat is very simple to operate. Push the on/off button and turn the dial to set the floor temperature. It has several other features:

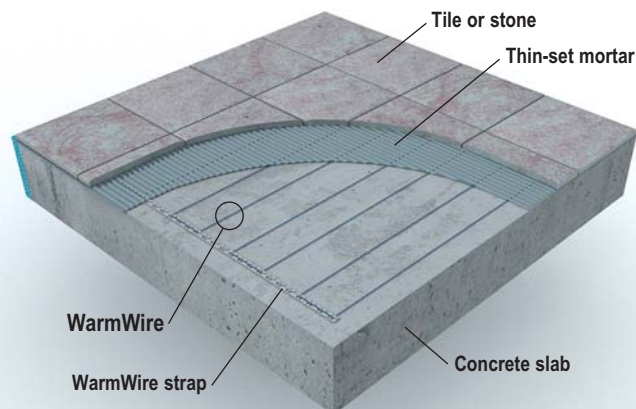
- A floor sensor that directly senses floor temperature
- Built-in ground fault protection with no need for a separate GFCI (in most code areas)
- Temperature range of 59° to 95°F
- 16-amp capacity to control up to 150 sq.ft. of 120-VAC SunTouch WarmWire
- Connection for new Remote FloorStat Control



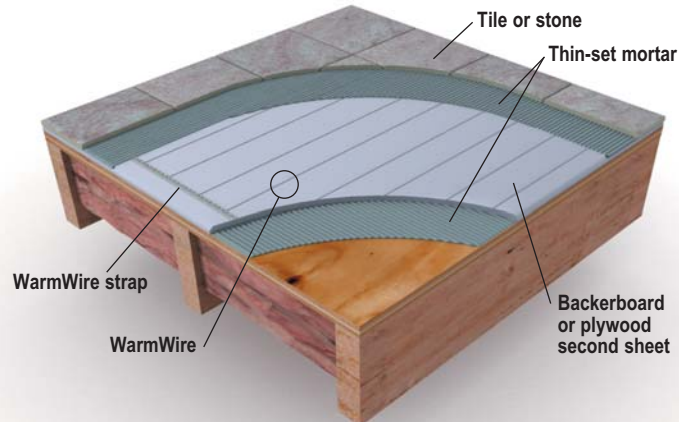
Note:
Non-programmable FloorStat available only in 120 VAC model.

WarmWire™ in slab and framed floor applications.

WarmWire in thin-set over slab.



WarmWire with tile backer board.



Easy to install.

There's a WarmWire spool sized for any project. Layout and attach the WarmWire strap. Fasten the WarmWire to the strap as you weave it across the floor. Put down a layer of thin-set mortar for tile or stone, or use a self-leveling cement over the cables for laminates, vinyl, carpet floor coverings. Our installation manual shows all the details.

Affordable and efficient.

The materials cost for an average 30-40 sq.ft. WarmWire floor is less than \$500. WarmWire is energy-conscious, too. Ten square feet of wire uses the same energy as two 60W light bulbs. At 10¢ a kilowatt, 40 sq.ft. of heat would cost only \$3.00 a month.

Control your comfort.

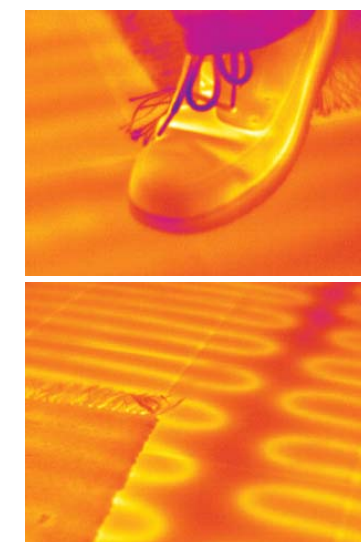
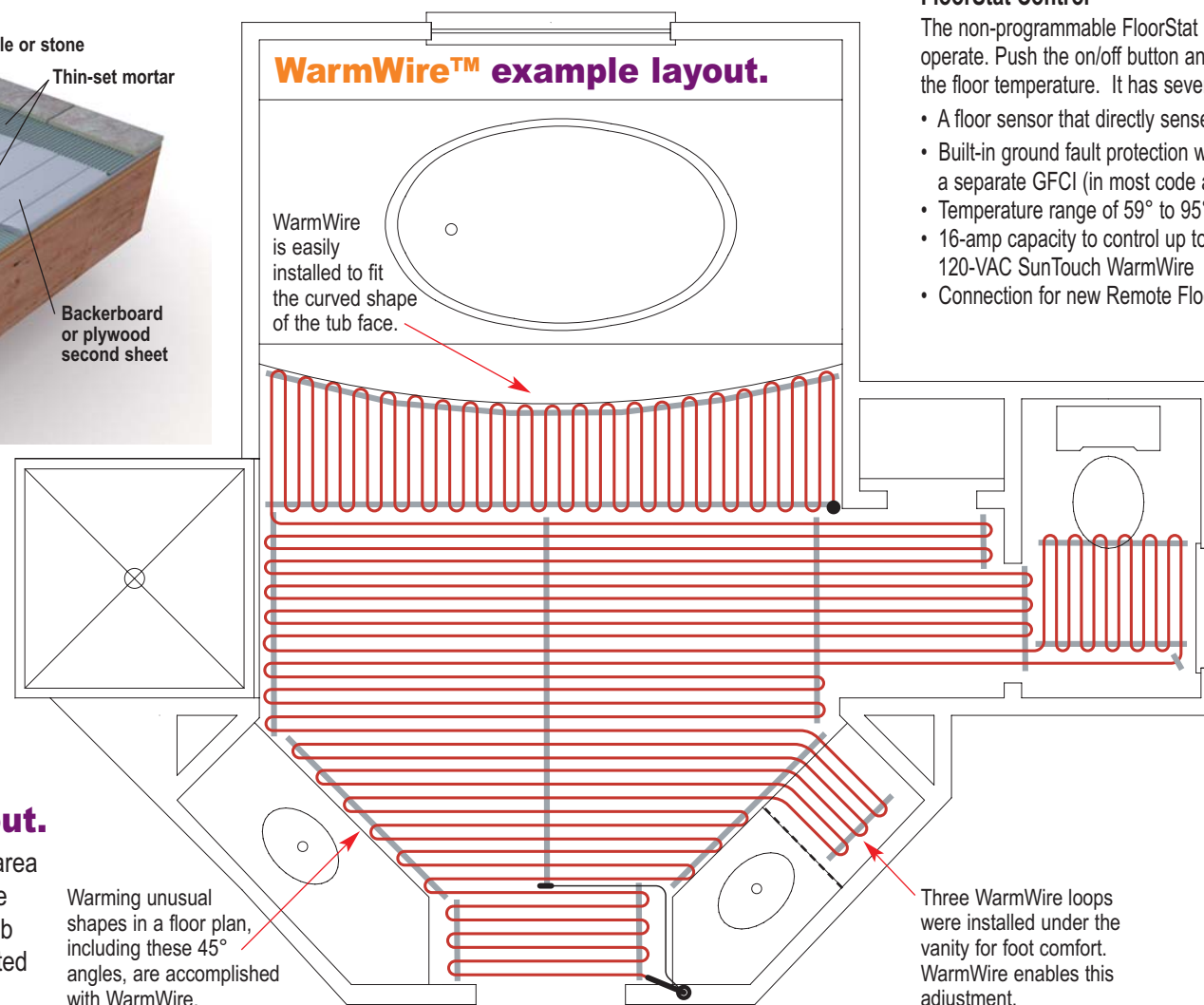
The FloorStat uses a floor sensor to control temperature. The programmable FloorStat automatically turns the system on and off based on your personal schedule.

Engineered for safety.

Power leads and heating elements are fully grounded from one end of the WarmWire to the other. They're also armored against job site abuse. The heating elements are reinforced with Aramid fiber and insulated with ETFE. WarmWire registers an ultra-low electromagnetic field (EMF). No other company offers this combination of safety features.

WarmWire™ example layout.

In the bathroom at right, note the curved area in front of the whirlpool tub where WarmWire easily installs to the unusual shape of the tub face. Note 45° angles which are easily heated with WarmWire.



Nothing matches the comfort of radiant heat. Infrared photography proves it!